



GMT MONTHLY MEMBERSHIP PROGRESS REPORT

Results as of: 5/31/2019

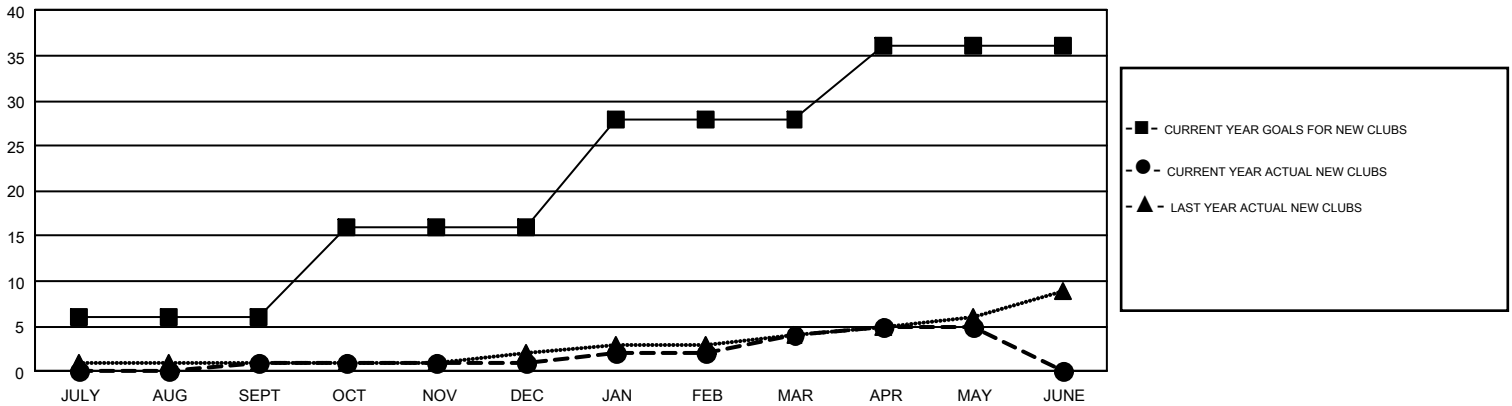
GMT Constitutional Area 1, Group C

GMT: STEVE ANTON

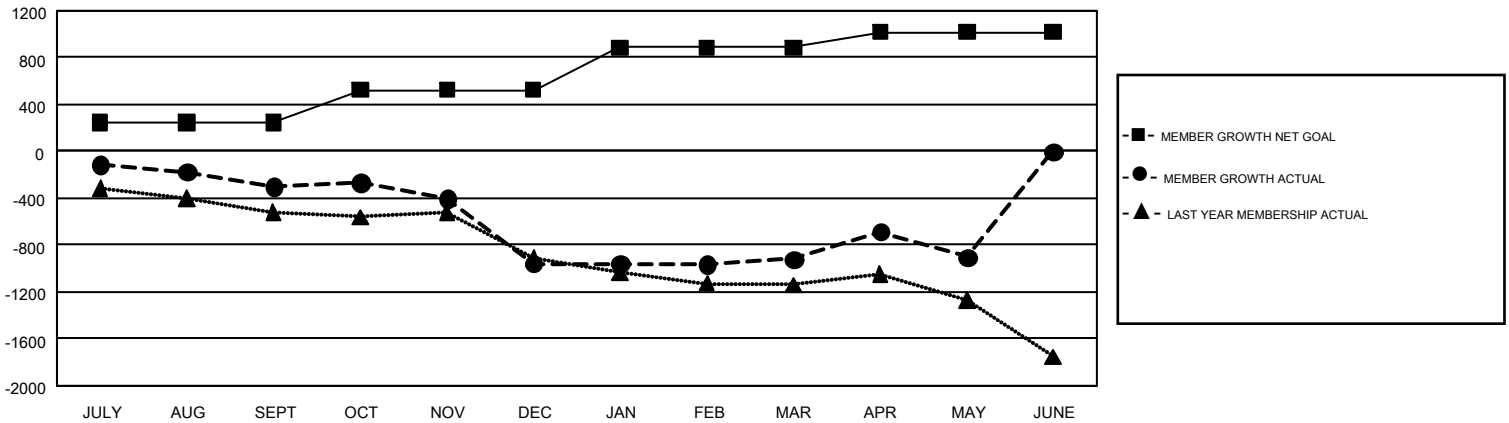
REPORT DOES NOT INCLUDE CLUBS IN UNDISTRICTED AREAS.

Clubs				Members			
RESULTS FOR 2018-2019				RESULTS FOR 2018-2019			
QUARTER	NEW CLUB GOAL	NEW CLUBS	DROPPED CLUBS	QUARTER	MEMBER GROWTH NET GOAL	MEMBER GROWTH ACTUAL	DROPPED MEMBERS ACTUAL (including transfers)
JULY/AUG/SEPT	6	1	7	JULY/AUG/SEPT	246	815	988
OCT/NOV/DEC	10	0	10	OCT/NOV/DEC	278	823	1,411
JAN/FEB/MAR	12	3	3	JAN/FEB/MAR	365	932	783
APR/MAY/JUNE	8	1	2	APR/MAY/JUNE	131	797	715

GOALS AND ACTUAL NEW CLUBS CUMULATIVE



GOALS AND ACTUAL MEMBERS CUMULATIVE



DROPPED CLUBS: 22	890 CLUBS OF 1,475 ADDED 1 OR MORE NEW MEMBERS	GENDER DISTRIBUTION
DROPPED MEMBERS	CLICK HERE FOR CUMULATIVE MEMBERSHIP DATA	MALE 28,207 (71.23%)
DECEASED 612		FEMALE 11,395 (28.77%)
CLUB CANCELLED 151		TOTAL FAMILY UNIT MEMBERS 7,425
OTHER 3,127		FAMILY MEMBERS PAYING HALF DUES 3,801
TOTAL 3,890		